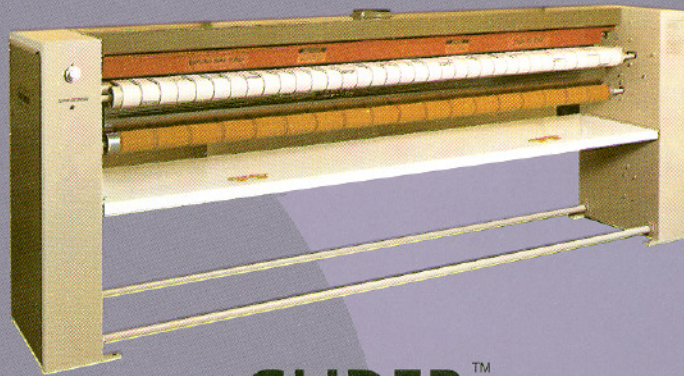


FLATWORK FINISHING EQUIPMENT



FLATWORK FINISHING EQUIPMENT

SHARPER FINISH



GLIDER[™]

MODELS G85, G120, S85, S120

FLATWORK FINISHING EQUIPMENT

FLATWORK FINISHING EQUIPMENT

SHARPER FINISH



WRINKLED LINENS CAN DESTROY THE LOOK OF A BEAUTIFULLY FURNISHED ROOM. AND IF YOU

ARE IN BUSINESS, ATTEMPTING TO USE "NO IRON" OR "WRINKLE RESISTANT" LINENS WILL NOT SOLVE THE

PROBLEM. SYNTHETIC LINENS WERE DEVELOPED PRIMARILY FOR HOME USE, WHERE FRESHLY WASHED LINENS

CAN BE SNATCHED WARM FROM A DRYER AND ARE NOT OFTEN

EXPOSED TO HARSH LAUNDRY CHEMICALS. BECAUSE OF HEAVIER

USE, HOWEVER, COMMERCIAL LINENS ARE INDEED EXPOSED TO

HARSH CHEMICALS, OFTENTIMES ON A DAILY BASIS. TO GET THE LOOK OF BEAUTIFULLY FINISHED LINEN, ALL

FABRIC, REGARDLESS OF FIBER CONTENT OR TREATMENT, MUST BE PROPERLY FINISHED. WITHOUT FINISHING,

TOP QUALITY CANNOT BE

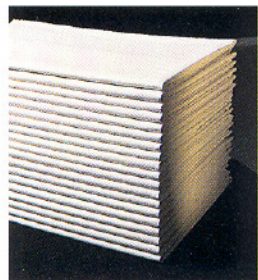
TODAY'S MARKET. THE



ACHIEVED AND ANYTHING LESS JUST DOES NOT SELL IN

GLIDER WILL GIVE YOU "BETTER THAN HAND FINISHED

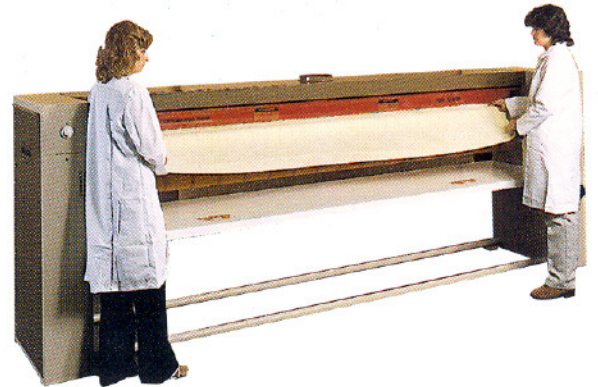
QUALITY" AT A FRACTION OF HAND FINISHED COST. IN ONE CONTINUOUS PROCESS, THE GLIDER DRIES AND



IRONS LINEN TAKEN DIRECTLY FROM THE WASHER/EXTRACTOR, AND GENTLY STRETCHES THE

FABRIC, THEREBY REMOVING WRINKLES AND CREATING A GLOSSY FINISH. BECAUSE TUMBLE

DRYING USES MORE ENERGY, YOU SAVE COSTS WHILE ACHIEVING A BETTER LOOK.



GLIDER™

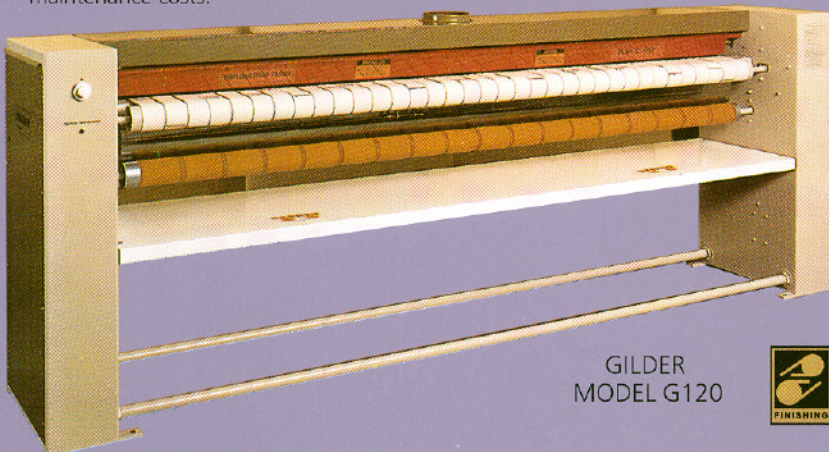
MODELS G85, G120, S85, S120

Fabric: The Glider can finish washable flat items such as table cloths, napkins, sheets, or pillowcases, regardless of whether they are made of natural cotton, blended cotton, or polyester fabrics.

Function: The Glider is easy to use. The operator simply lays the linen on the automatic input conveyor and the machine does the rest. The linen enters the machine at exactly the right speed passing between a revolving padded pressure roll and a revolving heated cylinder. With these rolls moving slightly faster than the automatic input conveyor, the fabric is pulled tightly readying it for heat and pressing. The linen is then transferred to the finishing ribbons for another gentle stretching, polishing, and drying.

Features: Full safety features, heavy duty construction, and proven reliability have all been incorporated into the Glider. Features include a formed and welded heavy steel constructed frame, a simple and dependable drive system, nomex padding and ribbons, interlocked side access panels, a full-width safety finger guard, emergency stop button, 24 volt control circuits, automatic pressure control, and instructional and safety displays.

Fewer Parts: The Glider is the least expensive full sized finisher available. The Glider features a unique burner system that eliminates the need for a complex forced air system found in finishers using our older burner designs. The Glider's burner is a virtually silent, natural draft burner with a greatly simplified pilotless electronic ignition and control system resulting in fewer parts (the Glider's 120" burner has 9 components vs. 47 on a forced air burner), greater efficiency, and lower operating and maintenance costs.

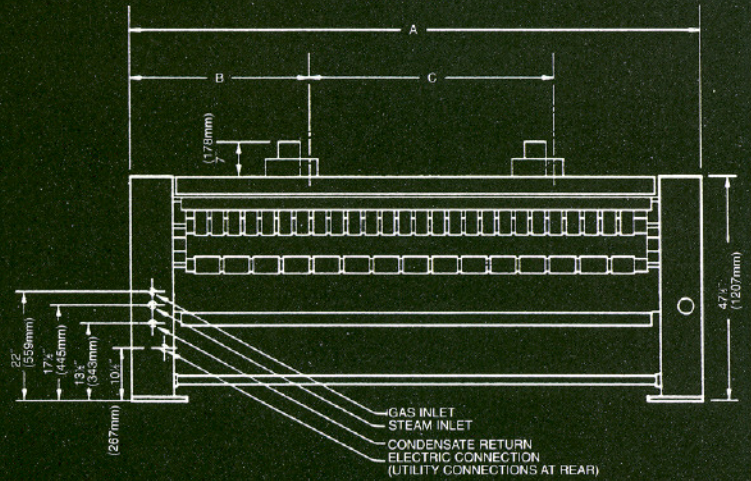


GILDER
MODEL G120

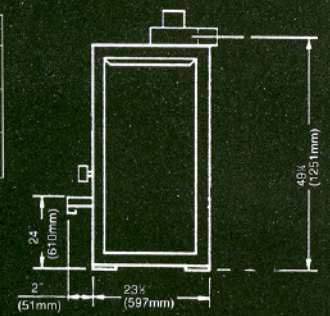


SPECIFICATIONS

FRONT VIEW



MODEL	GLIDER 85"	GLIDER 120"
A	114" 2896mm	149" 3785mm
B	33 1/2" 851mm	37 1/2" 953mm
C	54 1/2" 1385mm	75 1/2" 1918mm



- Each blower has 4" round (102mm) discharge connection.
- Each blower will discharge approximately 300 CFM at 1" s.p. vent must be independent and not interconnected with any other vent line.
- The two blowers may be connected to one independent main line, having a minimum diameter of 6" (152mm).

Allow minimum of 18" (457 mm) clearance at ends of machine for maintenance access.
 Provide adequate make-up air according to current local requirements.
 Do not use for construction purposes unless certified correct by Sharper Finish.

Full Range: Our Finishers incorporate a single cylinder design which can be heated by gas, Cylinder diameters range from 5.5" (140 mm) to 30" (725 mm) and are available in widths from 36" (914 mm) to 132" (3353 mm). There are hundreds of models to choose from including finishers with built-in folders, separate high speed folders, small piece folders, and feeding aids.

Find out why: Every year hundreds of hotel and motel managers, hospitals and nursing home administrators, laundry and dry-cleaning operators, club managers, restaurant owners, rental operators, governments, ship owners, and households choose Sharper Finish. Contact your local Sharper Finish Distributor or our sales department for an objective analysis of your equipment needs. We build more of these type of machines than anyone in the world. You can be confident in your purchase because of the backup and support you can expect to receive from the acknowledged leader, Sharper Finish, Inc.

Technical Data- GLIDER™

	G85	G120	S85	S120
Finishing Surface Width Inches (mm)	85 (2159)	120 (3048)	85 (2159)	120 (3048)
Heated Roll Diameter Inches (mm)	12 (305)	12 (305)	11 (279)	11 (279)
Finishing Speed Feet per Minute (m/mm)	18 (5.5)	18 (5.5)	18 (5.5)	18 (5.5)
Electrical Requirements with Canopy Motor H.P. (kW)	1/3+1/50+1/50 (.25+.015+.015)	1/3+1/50+1/50 (.25+.015+.015)	1/3+1/50+1/50 (.25+.015+.015)	1/3+1/50+1/50 (.25+.015+.015)
Electrical Requirements without Canopy Motor H.P. (kW)	1/3 (.25)	1/3 (.25)	1/3 (.25)	1/3 (.25)
Maximum Gas Input B.T.U./HR. (CAL., kg/hr.)	85,000 (21420)	120,000 (30240)	-	-
Gas Inlet Inches	1/2	1/2	-	-
Steam Consumption Boiler H.P. (kg/hr.)	-	-	.85 (14)	1.2 (19)
Steam Inlet Inches	-	-	1/2	1/2
Maximum Steam Pressure P.S.I. (ATU)	-	-	150 (10)	150 (10)
Net Weight Pounds (kg)	1175 (533)	1375 (625)	1260 (572)	1375 (625)
Domestic Crated Weight Pounds (kg)	1425 (646)	1750 (795)	1510 (685)	1750 (795)
Domestic Crated Size L x W x H Inches (mm)	122x38x62 (3099x965x1575)	157x38x62 (3988x965x1575)	122x38x62 (3099x965x1575)	157x38x62 (3988x965x1575)
Domestic Crated Volume Cubic Feet (m3)	166 (4.7)	214 (6)	166 (4.7)	214 (6)
Export Crated Weight Pounds (kg)	1485 (668)	1535 (691)	1620 (729)	1860 (837)
Export Crated Size L x W x H Inches (mm)	122½x38½x62¼ (3112x978x1581)	157½x38½x62¼ (4000x978x1581)	122½x38½x62¼ (3112x978x1581)	157½x38½x62¼ (4000x978x1581)
Export Crated Volume Cubic Feet (m3)	170 (4.8)	218 (6.2)	170 (4.8)	218 (6.2)

Distributed By:



Sharper Finish, Inc.

4500 Augusta Boulevard

Chicago, IL 60651

U.S.A.

USA Sales Office: Entire USA Call 800-247-4766 or 773-276-4800 * Fax 800-247-4428 or 773-276-6878

International Sales Office: Entire USA and Canada Call 800-474-7346

Outside USA and Canada Call 915-532-1926 * Fax 915-532-8373

Form No. SF 5047 Rev. 7/96

Copyright 1996 by Sharper Finish, Inc.

In view of Sharper Finish's policy of providing you with the best products possible, we reserve the right to change product specifications and appearance without notice. Contact the sales department for exact specifications, dimensions, and product approvals. Sharper Finish has manufactured flatwork finishing equipment since 1911. We are now one of the leading world manufacturers exporting over 60% of our production. We actively market our products in 92 countries and have over 175 authorized distributors worldwide.